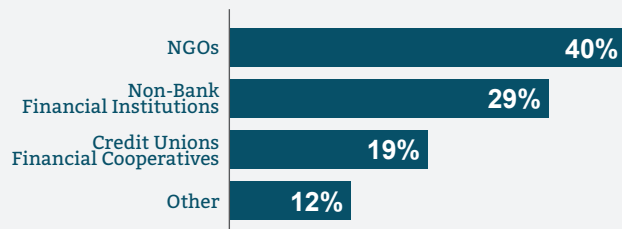


# Microfinance in Europe: Survey Report 2016-2017

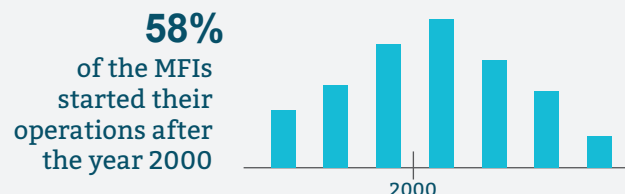


## MFI characteristics

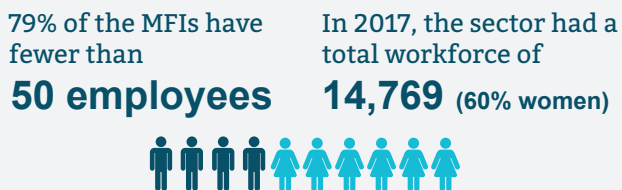
### Heterogeneity of business models



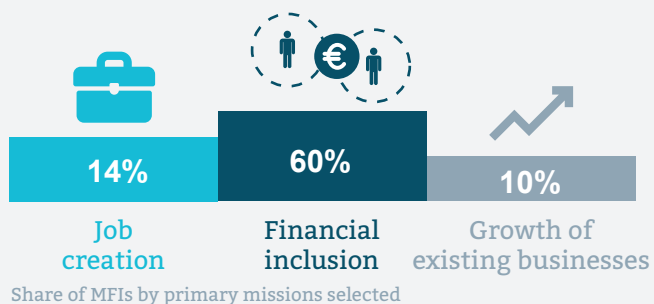
### Relatively young sector



### Small-sized enterprises

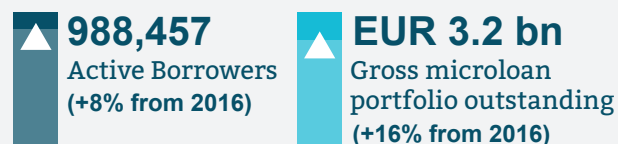


### Variety of social goals

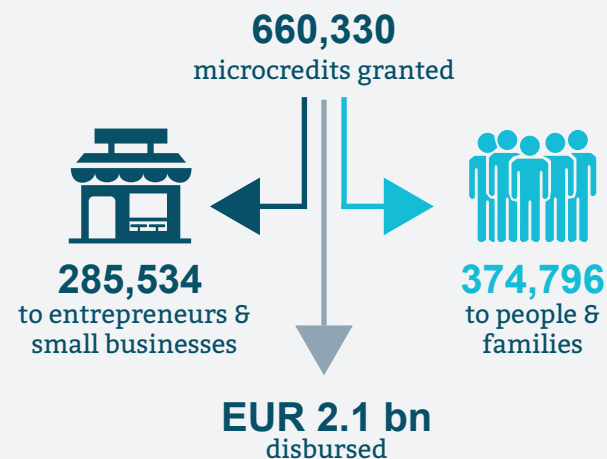


## Microlending activity

### Outreach by December 2017



### Key figures for 2017



### The average profile of the entrepreneur supported

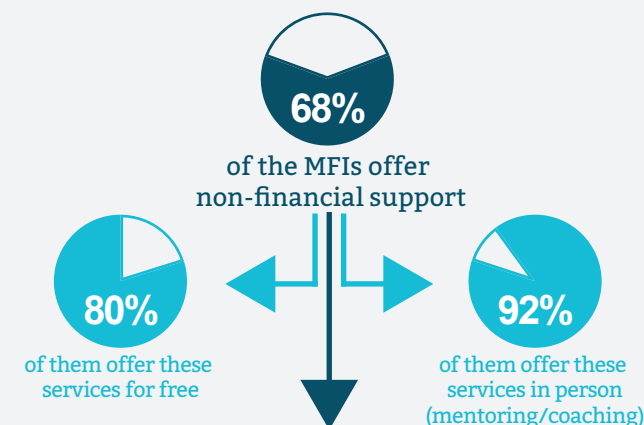


## Non-financial support

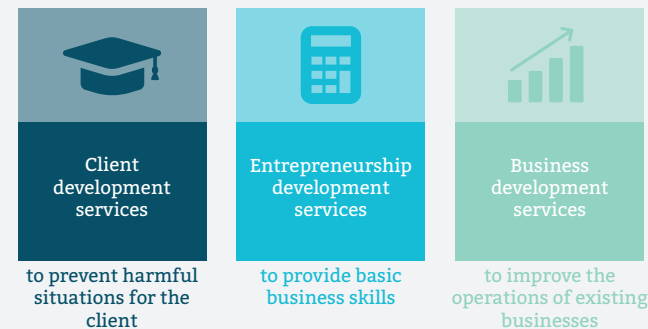
### Outreach by December 2017



### Support to vulnerable people and entrepreneurs



### Each of the following services is delivered by at least half of the MFIs offering non-financial support





EUROPEAN  
MICROFINANCE  
NETWORK



MICROFINANCE CENTRE

# Microfinance in Europe: Survey Report 2016-2017

The European Microfinance Network (EMN) and the Microfinance Centre (MFC) are the two main European networks supporting the development of the microfinance sector across the continent. The data presented in this document constitutes the main results of a joint publication: "Microfinance in Europe: Survey Report 2016-2017". This Report is available on the networks' respective websites.



POLITECNICO  
DI TORINO

With contribution from



With financial support  
from the European Union

